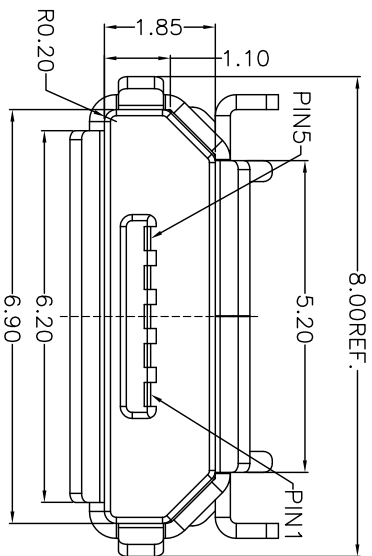
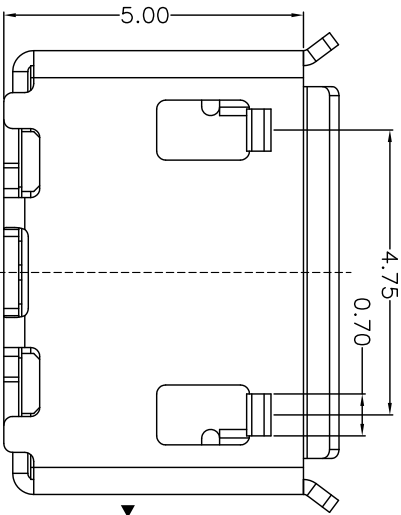


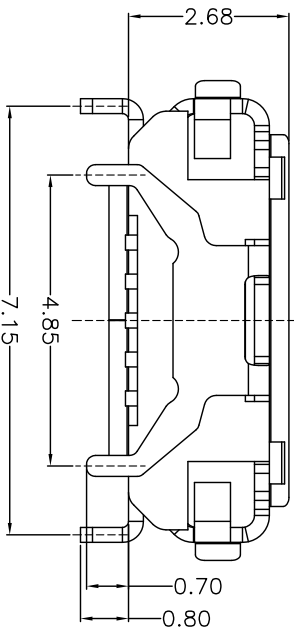
正视图



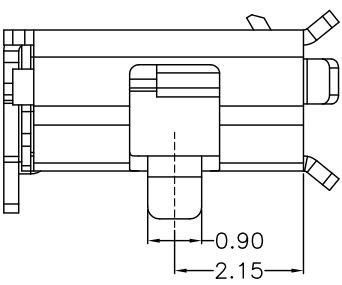
上视图



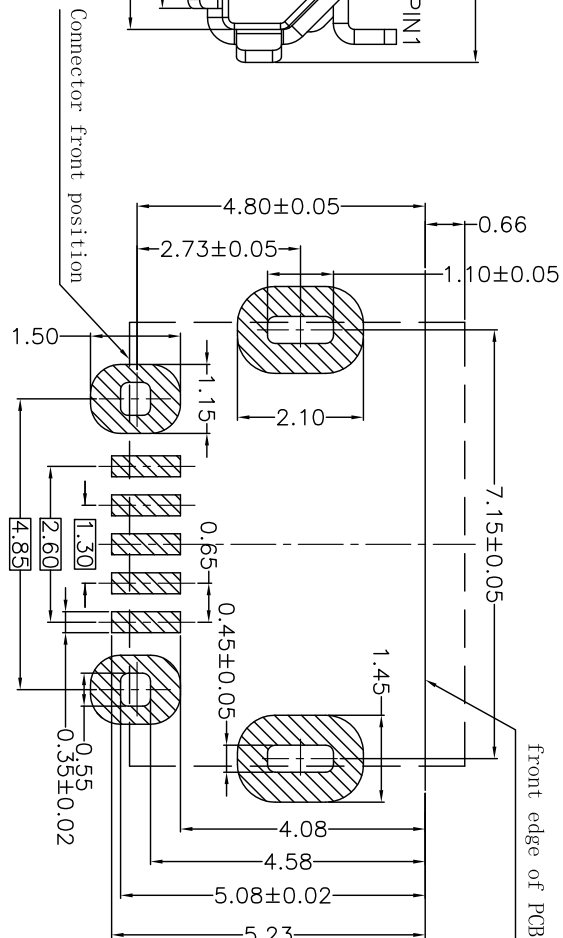
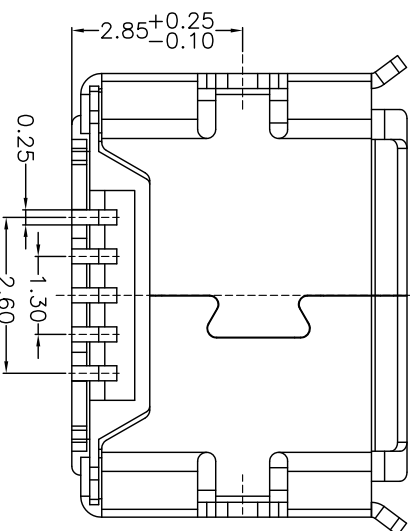
背视图



侧视图



下视图

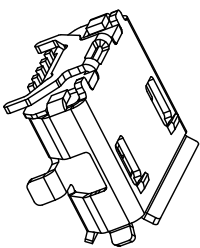


front edge of PCB

MARK	DATE	ECN NO.	DESCRIPTION	REV.	DESIGN

备注:

- 产品规格:
 - 1-1. 插入力: 35N MAX.
 - 1-2. 拔出力: 10N MIN, INITIAL 8-20N AFTER 10000 CYCLES
 - 1-3. 额定电流: 1.0A
 - 1-4. 额定电压: 30V
 - 1-5. 耐久性: 10000 CYCLES MIN.
 - 1-6. 耐电压: 100V AC MIN.
 - 1-7. 接触阻抗: 30mΩ MAX, INITIAL: 40mΩ MAX AFTER 10000 CYCLES
 - 1-8. 绝缘电阻: 100MΩ MIN
 - 1-9. 工作温度: -30° TO +80°
- 所用材质须符合RoHS要求



SEC A-A
SCALE 1:1

UNLESS OTHERWISE SPECIFIED TOLERANCE			
ANG	TOL	DIM	TOL
.X	±5.0°	.X	±0.25
.XX	±3.0°	.XX	±0.15
.XXX	±2.0°	.XXX	±0.05

丞永實業有限公司
 BLUE SOURCES ELECTRONICS CO.,LTD.

DRAW NO.	PR-1072	DATE	5/13/10
DESIGN	Mary	VERIFIED	Andrew
APPROVED	Jonson	5/13/10	

TITLE		PART NO.	
Micro USB SPVF B TYPE 四脚全插(牛角型)		EMTU-BF0522-1B	
UNITS	SCALE	PAGE	REV
mm	1:1	1/1	A/2