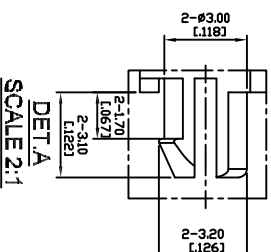
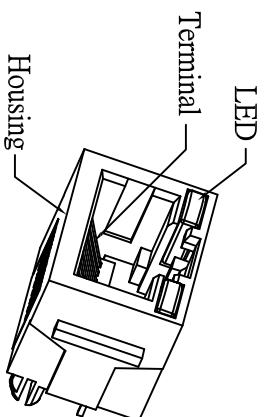


RECOMMENDED PCB LAYOUT
TOP VIEW
TOLERANCE: ±0.05mm
PCB THICKNESS: 1.6mm/0.05mm

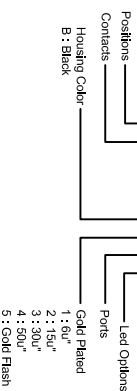


DETAIL A
SCALE 2:1

Electrical Characteristics :
Insulation Resistance : 500M Ω Min.
Contact Resistance : 50m Ω Max.
Withstand Voltage : 500 VAC 1 minute.
Current Rating : 1.5A

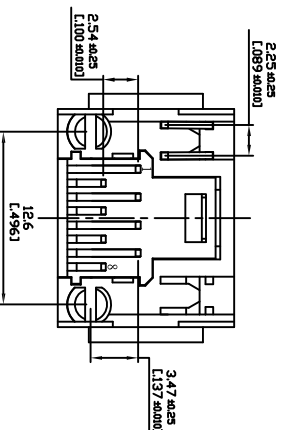
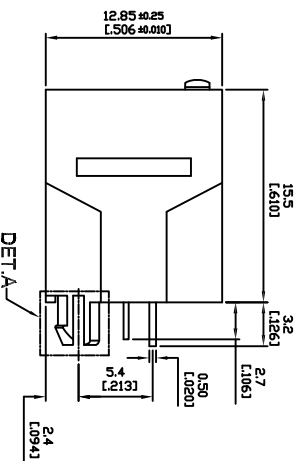
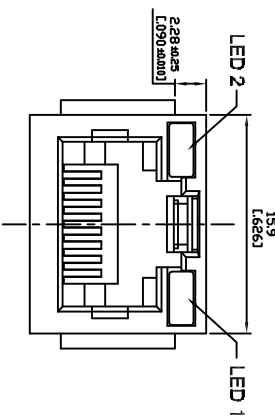
Material:
Housing: Thermoplastic UL 94V-0
Contact : Selective Gold Plating
Terminal: 0.35mm Thickness Copper Alloy
Plated With Gold And Tin In Solder Area.

PART NO : 8188PN-B*1*



LED Color Options Table

LED Color Options	LED 1 (Right)	LED DASH OPTION
LED 2 (Left)	LED 1 (Right)	
No LED	No LED	0
Yellow	Green	1
No LED	Green	2
Yellow	No LED	3
Green	Yellow	4
Yellow	Green	5
Orange/Green	Yellow	6
Yellow/Green	Orange/Green	7
Orange/Green	Yellow/Green	8
Orange/Green	Yellow	9



ZONE	REV.	DESCRIPTION	DATE	DWG.

FILE NO : B1 (SERIES)

TOLERANCE(公差):
0.000 mm ±0.1mm
0.00 mm ±0.2mm
0.0 mm ±0.3mm

承永實業有限公司
BLUE SOURCES ELECTRONICS CO.,LTD.

TITLE	UNIT
RJ45, UnShielded, Receptacle, Vertical, Singcal Port, THH	mm

PART NO.	SCALE
8188PN-B*1*	1:1

DRAWN BY	DATE	REV.
Jose	2012.05.17.	A.0

CHECKED BY	DATE
Jay	2012.05.17.